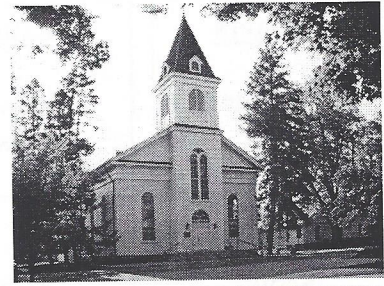


First Presbyterian Church

8047 Church Street
Richland, MI 49083
269~629~4944
269~629~4945 fax
fpcrich@firstpresrichland.org
www.fpcrich.com

Rev. Dr. Mark W. Jennings
revmarkj@tds.net
269~731~2519 home

Volume 51, Number 2, Monthly



"Both Sides Now"

I saw the other day that both President Obama and Michelle Obama's favorite books of 2015 are about marriage. The president's choice was Lauren Groff's best-selling Fates and Furies, which tells the story of a marriage from both the husband's and the wife's perspective. The First Lady's favorite book was The Light of the World, Elizabeth Alexander's memoir about the sudden death of her husband. (New Republic, December 9). I have to admit that the president's choice intrigues me more. It is good that someone is affirming that the way a husband views his marriage and the way a wife views the same marriage, may be two very different things. I suppose the way each of us views our lives is necessarily affected by our own unique perspective.

But I also thought that it was interesting that this choice came not just from a married man, but from a politician. How rare is it that we try to see politics from another point of view? How many of us watch news shows that are close to our point of view and avoid the other ones because we think they've got it all wrong anyway? How many of us don't want to talk politics with our friends or family because it will only make us mad? After all, not only don't they agree with us, but they won't even listen to us! Perhaps that is one of the legitimate criticisms of Washington today and even of this president—do they listen to all sides?

Do we? Surveys tell us that one of the reasons that young people stay away from church is not that our music isn't upbeat enough, but for other reasons entirely. One Washington Post author who is part of the Millennial generation says:

"According to Barna Group, among young people who don't go to church, 87 percent say they see Christians as judgmental, and 85 percent see them as hypocritical. A similar study found that "only 8% say they don't attend because church is 'out of date,' undercutting the notion that all churches need to do for Millennials is to make worship 'cooler.' " In other words, a church can have a sleek logo and Web site, but if it's judgmental and exclusive, if it fails to show the love of Jesus to all, millennials will sniff it out. Our reasons for leaving have less to do with style and image and more to do with substantive questions about life, faith and community. We're not as shallow as you might think."

For me it comes down to whether we listen or not. Our children's faith should not be the same as ours—they're different people with different experiences. But do we listen to them? Do we listen to the person who is different from us?

Obviously these thoughts are coming in the midst of a political season and it seems like no one is listening to anyone else. But if we listen with the ears of faith, won't it enrich us to hear about someone else's experience of God? Without judgment, just rejoicing in the myriad ways that God makes himself known.

Grace and Peace,

Mark

February Volunteer Assignments

| | <u>Greeters</u> | <u>Ushers</u> | <u>Coffee</u> | <u>Nursery Help</u> | <u>Teacher/Crafter</u> |
|----|-----------------|-------------------------|---------------------------|---------------------|------------------------|
| 7 | Carpenter | Carpenter Langshaw | D Odar Polzin | Steele | VanDyke Osborne |
| 14 | Scouts | Scouts | Mason Rothenberg | VanDyke | Deater Gibson |
| 21 | E & M Davis | E & M Davis Langshaw | Leiter Mack M Simon | Smith | Hart Gauthier |
| 28 | Fiordalis | Fiordalis Langshaw | Romyak Sunden | Steele | Mandrell Ruser |

Serving Communion

Please remember that only ordained elders and deacons should serve communion.

February 7

Wendy Field
Faith Fiordalis
Zip Fiordalis
Gary Gibson
Joyce Gibson
Anna Gross
Rod Gross
Sandy Hart
Kay Hutchinson

March 6

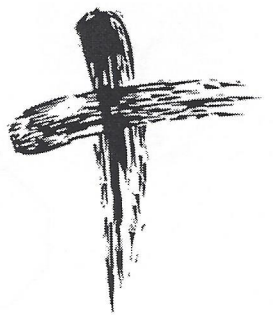
Bill Hubbard
Joyce Hubbard
Kay Irey
Larry Irey
Karen Kendall
Tom Kendall
Greg Keusch
Leslie Keusch
Jean Kubiak


April 3

Laura LaLonde
Barb Langshaw
Larry Langshaw
Cindi Lebiecki
Nancy Lynch
Amy Mack
Becky Mandrell
Sharin Noall
Tom Noall

We rely on many members and friends to help Sundays run smoothly and be a good worship experience for those attending our church. If for some reason you are not able to help on the day originally selected, please find a replacement or someone to trade with, and let the church office know. The yearly list of volunteers can be found at www.fprich.com, under "Living the Faith", then "volunteer schedule". Or call Julie for a list of names. Thank you!

February 2016



| Sun | Mon | Tue | Wed | Thu | Fri | Sat |
|--|--|--|--|---|-----------|-----------|
| | 1 9:00 Care Team 10:30 Office Staff 6:00 Boy Scouts | 2 10:00 Connected Threads 5:45 Girl Scout Leaders | 3 1:00 Presbyterian Women Meeting 7:00 Cub Scouts | 4 9:00 Bible Study | 5 | 6 |
| 7 8:30 Chancel Choir 9:45 Worship - Communion 11:05 Sunday School 12:00 Officer Training 5:00 Youth Group | 8 10:30 Office Staff 6:00 Boy Scouts | 9 8:00-4:00 Ryan Int. Workshop in GPR 10:00 Connected Threads | 10 1:00 Women's Book Club at Carol Thorne 7:00 Cub Scouts 7:00 Ash Wednesday Service | 11 9:00 Bible Study 6:00 Deacons | 12 | 13 |
| 14 8:30 Chancel Choir 9:45 Worship - 2 cents-a-meal 11:05 Sunday School 5:00 Youth Group | 15 9:00 Care Team 10:30 Office Staff 6:00 Boy Scouts <i>Julie's gone for the week. Oh joy!</i>  | 16 10:00 Connected Threads | 17 5:00 Worship & Music Meeting 6:00 Session 7:00 Cub Scouts | 18 9:00 Bible Study | 19 | 20 |
| 21 8:30 Chancel Choir 9:45 Worship 11:05 Sunday School 12:00 Soup Fest 3:00 VGA - Whiskey Before Breakfast 5:00 Youth Group | 22 10:30 Office Staff 6:00 Boy Scouts | 23 10:00 Connected Threads | 24 9:30 Flower Group in White Room 6:00 Committee Meetings Missive Articles Due | 25 9:00 Bible Study 7:00 Cub Pack Mtg. | 26 | 27 |
| 28 8:30 Chancel Choir 9:45 Worship 11:05 Sunday School 12:00 Officer/Staff Retreat at RACC | 29 10:30 Office Staff 6:00 Boy Scouts | | | | | |



Presbyterian Women

*PW meets the 1st Wednesday of each month at 1:00 p.m. in the church,
The next meeting is February 3rd. EVERY WOMAN is welcome.*



Looking ahead, we will be having our
Spring Rummage Sale,
but a little bit later than "normal".
Put April 29th and 30th on your calendars now.
More time information coming next month!

PW PURPOSE: Forgiven and freed by God in Jesus Christ and empowered by the Holy Spirit, we commit ourselves to nurture our faith through prayer and Bible Study, to support the mission of the church worldwide, to work for justice and peace and to build an inclusive, caring community of women that strengthens the Presbyterian Church (USA) and witnesses to the promise of God's Kingdom.



It's the middle of winter, so naturally it's time to start thinking about summer camp! CAMP GREENWOOD is a ministry of our very own Presbytery of Lake Michigan. Over many decades, it's been part of our fellowship, part of our mission, and summer jobs for our youth. We used to do a family weekend every September! Brochures are available in the Narthex and on the small table next to the Fireplace Room. Read up and see what they have to offer for you, your kids, your grands, or your family.

ENVELOPES.....

Make sure to look inside your offering box for a single blue envelope. This is for the PER CAPITA APPORTIONMENT. If we all help pay the \$25.37 due per member in your household, this will greatly assist in the HUGE expense for the church!

FEEL FREE TO ROUND UP! The church is happy to take care of your change.



Do you have preschool/toddler age books that you're looking to find a home? The Food Pantry can help! When we have families that have children, they are welcome to take a book. We're happy to take any and all children's books, but are currently running a little short on books for the little ones. Thank you!



ATTENTION ~

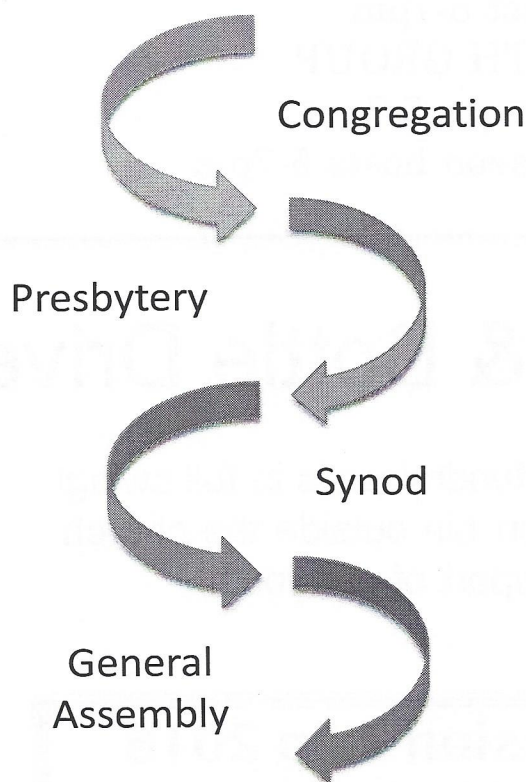
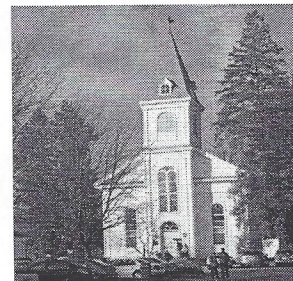


DO YOU HAVE A KEY TO THE CHURCH? IF YOU DON'T NEED IT ANYMORE, PLEASE HAND IT IN TO THE OFFICE. This could be past Scout leaders, past food pantry, past elders and deacons, past teachers, or anyone who has been involved with church life at some time. Check your key holder and if you see one you don't recognize, please bring it in and we can test it. The church keys are about 1/8 inch longer than most standard key sizes. Thank you!!

Just another reminder that the volunteer list for 2016 (greeter, usher, coffee) is posted on the bulletin board by the water fountains. It's also on our website, www.fperich.com, under Living The Faith/Volunteer Schedule, or in the December Missive. Many of us will be doing the same job multiple times this year.

This year Christmas falls on a Sunday, so I'll be looking for volunteers that morning! Something to think about. Thank you, friends!

Per Capita contributions are the way we share the expenses of the PC(USA) system of government. The annual amount is a combined request from the Presbytery, Synod and the General Assembly - of which each congregation is a part.



2016 per capita is \$25.37 per member.

Presbytery of Lake Michigan's \$15.00 share of the per capita budget is used for expenses:

- Presbytery Operations
- Book of Order Committees
- Mission Initiative Grants
- Presbytery Meetings
- Audit & Legal Expenses

The Synod of the Covenant's \$3.25 share of the per capita budget is used for expenses related to:

- Fulfilling constitutional and administrative responsibilities
- Facilitating conversation between the governing bodies of the church
- Synod Meetings
- Stated Clerk and Treasurer's Operations
- Legal Expenses

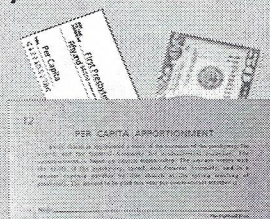
The General Assembly's \$7.12 share of the per capita budget is used for:

- General Assembly Meetings
- Immigration Issues
- Leadership Development
- Office of the General Assembly
- Constitutional Services

How Can You Help First Presbyterian?
Please return your Per Capita Apportionment envelope with funds to cover your family's membership. Thank you!

Members:

- 1 = \$25.37
- 2 = \$50.74
- 3 = \$76.11
- 4 = \$101.48
- 5 = \$126.85
- 6 = \$152.22



Youth Group

2015-2016

Youth Group Schedule

February 7 – Westminster Presbyterian hosts 4-6pm*

February 14 – First Pres Kalamazoo hosts 5-7pm

February 21 – WE host 5-7pm

February 28 – NO YOUTH GROUP

March 6 – Pine Island hosts 5-7pm

March 13 – First Pres Kalamazoo hosts 5-7pm

Youth Mission Can & Bottle Drive

The youth can & bottle drive mission fundraiser is in full swing!
Simply drop your cans in the collection bin outside the church
office! Thank you for your support of our youth!

West Virginia Youth Mission Trip 2016

June 25-July 2, 2016

Colcord, West Virginia

Purpose:

- ❖ To expose our students to people of all walks of life
- ❖ To help and serve
- ❖ To help bring God's love to all people

Who Is Served:

- ❖ Mostly elderly and less fortunate individuals living in the Colcord, WV area as chosen by the PC(USA) Disaster Relief.

Youth Group

Youth Mission Sponsorship Fundraiser

The Youth have had a wonderful response to their Envelope Fundraiser and have received some amazing stories of what inspired each donation number! Here are a few:

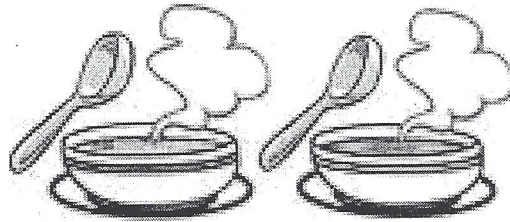
#5 – For 5 healthy, wonderful grandchildren!

#56 – We were married in 1956, So, we're celebrating our 60th wedding anniversary this year. (We would have taken the "60" envelope but it was already taken!!) We have had a very good marriage. John says the best years of his life! I have to agree. We've both lived in this area most of our lives and have profited from our association with people living here. Our friends and family are dear to us. This community has been good to us!! We look forward to giving back a small part of what we have been given. We've seen lots of changes – some good, some not so good. But this is life. Without change our lives would be stagnant.

#26 – We chose the number 26 because Juan officially became my boyfriend on April 22 (4+22) in 2004.

#78 – I chose the number 78 because... "The blizzard was great in '78." In 1978, in the middle of the blizzard in Kalamazoo, I gave birth to my first child on January 29th. I was snowed in at home. The sheriff's department got many volunteers to come to my house on snowmobiles because the roads were snowed in. The volunteers wrapped me in blankets, strapped me to a toboggan and hitched it to a snowmobile. It was dragged out to a cleared road about a quarter mile away. The toboggan tipped over on the way out and dragged me through the snow on my side. They got me to the hospital on time. My son will be 38 this week!

#50 – In honor of our 50th wedding anniversary – August 20, 2016.



Soup Fest!! February 21

Bring yourself, a soup, and the recipe, for the competition!

And some \$\$! To raise money for a new Christmas tree
we will sell tasting tickets!

25 cents each!



WOMEN'S BOOK CLUB

Carol Thorne will be hosting our next book club meeting on Wednesday, February 10th at 1:00. The book of discussion is "In The Sanctuary of Outcasts" by Neil White. Carol says this is a fairly easy read, so pick up a copy and join them at 407 Midlakes Blvd. in Plainwell! Newcomers are very welcome!

Ash Wednesday

We'll be having an
Ash Wednesday Service
on February 10th.

7:00 p.m.

This is a very moving and calming service. Hope you can make it.

*Ash
Wednesday*



Making a baby quilt for baptisms? Quilt labels available in the office!



Whiskey Before Breakfast

Another fantastic **VILLAGE GREEN ARTS** will be held
February 21st, starring *Whiskey Before Breakfast*.
They've been here before and absolutely blew the walls off!

Please join us on the 21st, at 3:00, to hear some excellent music,
brought to you by some really cool people.

As with ALL Village Green Arts performances, there is no charge to attend,
but we will be taking up a freewill offering and hope you will be generous.

We are self-sustaining and can only pay for these terrific performances
by the offerings of YOU!

The Presbyterian Women will have refreshments following the show. Thank you.

THE POWER OF PRAYER

In everything by prayer and supplication let your requests be made known to God. And the peace of God, which surpasses all understanding, will guard your hearts and minds in Christ Jesus.”
—Philippians 4:6-7

Could you or someone you know, benefit from the power of prayer? Did you know that it is as easy as picking up the phone to have your prayers multiplied by many caring members of your church family? We invite you to give prayer requests to any member of the Prayer Chain, who will pray for you or the person who needs God's help in a time of need. The person you contact will pass your request on to the next person on the list until the circle is complete. Be assured that we keep these matters in confidence.

We also invite others to join this circle of prayer.

Please note: participation is in no way restricted to women!

If you are interested, or have questions, please contact Mark or Julie at the office, 629-4944.

PRAYER CHAIN PARTICIPANTS

Marilyn Alman 623-2471

Diane Meitz 685-6272

Joyce Gibson 671-5019

Joan Willemstyn 344-1203

Joyce Hubbard 372-9205

Cindi Lebiecki 344-0332

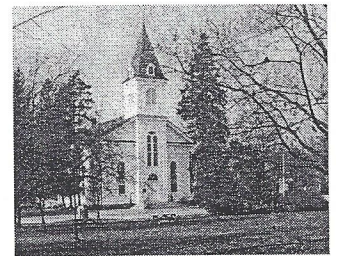
Phyllis Youse 731-4851

Caroline Gray 629-9216



Carillon Hymns and Honoree's for February

| <i>Date</i> | <i>Selection</i> | <i>Honoree</i> |
|-------------|---------------------------------------|------------------------------|
| 2/1 | <i>On Eagle's Wings</i> | <i>Morris Stimson</i> |
| 2/7 | <i>Amazing Grace</i> | <i>Brandon Dallace Young</i> |
| 2/14 | <i>What A Friend We Have in Jesus</i> | <i>Karen & Jon Koets</i> |



FOOD
PANTRY
CORNER



FOOD PANTRY

SOUP, CRACKERS, CEREAL
SNACK TREATS
PAPER SACKS

Bright Night

Wednesday, February 24, 2016

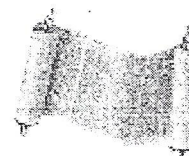
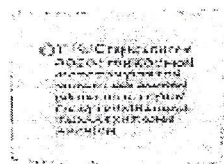
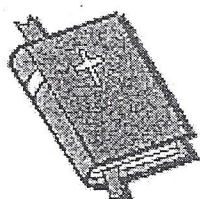
From 6:30 - 8:00 p.m. at Gull Lake High School

STRAIGHT TALK ABOUT MENTAL HEALTH

Come hear families share their perspectives
from a multi-generational view related to
depression and suicide.



Gull Lake Youth
Depression Committee



UNDERSTANDINGS OF THE BIBLE

A WEDNESDAY EVENINGS LENTEN STUDY
AT YORKVILLE COMMUNITY CHURCH
7 PM

February 10 thru March 16

How did the Bible come to be?

Who decided which books to include?

Some different ways the Bible is understood
will be the focus of this study:

LITERAL – LITERARY – HISTORICAL
BIBLICAL THEOLOGY – DE-MYTHOLOGIZING
METAPHORICAL

Each of these will be interpreted and appreciated for
the way each may undergird personal faith.

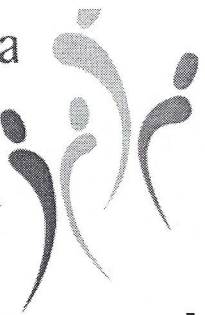


The course will be taught by

The Rev. Dr. David McShane

former pastor of First Presbyterian Church of Kalamazoo
and recent interim Minister at Yorkville Community Church.

Dave has taught at WMU and at
McCormick Theological Seminary



FIT CLUB!

Thursdays, 6 pm

Mary Jasiak returns as the "Queen of Fit Club"!

Join Mary on Thursday nights at 6 pm. You'll work out to moderately paced DVDs with friends, enjoy lots of laughs and get in shape! Do you have a favorite DVD? Bring it to class and see how much more fun it is to exercise with friends! Suggested Donation of \$2 or more.

UNDERSTANDING ISLAM:

A Guide to the 2nd Largest Religion in the World

Wednesdays, Jan 27 & Feb 3, 6-9 pm

FREE, Must Register at 269.629.9430

As part of our mission to encourage lifelong learning, we're offering a series to provide a greater understanding of the various religions practiced throughout the world. These free, informative seminars will be led by Scott Minehart, GLHS AP History and Comparative Religion teacher. Join us to develop a greater understanding of the history and tenants of the Islamic faith, as well as what the followers of this faith believe, why they hold these beliefs and how it translates into our modern society.

Come and learn, ask questions and expect an interactive evening! The first night will focus on history and end with a question and answer period. The second night will be led by two Muslim Americans, male and female, ready to answer your questions. We will be serving a middle-eastern buffet style meal, so please RSVP to reserve your spot on either night. 629-9430.

HOW TO USE YOUR SMART PHONE/TABLET WORKSHOP

Fridays, January 22 & February 19, 9-11 am

FREE, Must register at 269.629.9430

Do you wish you knew how to use your cell phone or tablet? Would you like to know more about the power and functionality of your smart device? Sign up for this workshop, and we will pair you with a Gateway student who will personalize instruction to your particular needs and device! Both Apple and Android platforms will be supported.

Valentine's Day History

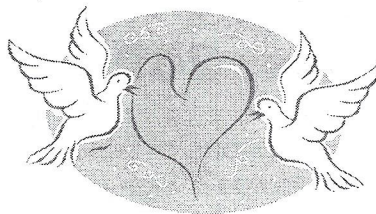
The history of Valentine's Day is obscure, and further clouded by various fanciful legends. The holiday's roots are in the ancient Roman festival of Lupercalia, a fertility celebration commemorated annually on February 15. Pope Gelasius I recast this pagan festival as a Christian feast day circa 496, declaring February 14 to be St. Valentine's Day.

Which St. Valentine this early pope intended to honor remains a mystery: according to the *Catholic Encyclopedia*, there were at least three early Christian saints by that name. One was a priest in Rome, another a bishop in Terni, and of a third St. Valentine almost nothing is known except that he met his end in Africa. Rather astonishingly, all three Valentines were said to have been martyred on February 14.

Most scholars believe that the St. Valentine of the holiday was a priest who attracted the disfavor of Roman emperor Claudius II around 270. At this stage, the factual ends and the mythic begins. According to one legend, Claudius II had prohibited marriage for young men, claiming that bachelors made better soldiers. Valentine continued to secretly perform marriage ceremonies but was eventually apprehended by the Romans and put to death. Another legend has it that Valentine, imprisoned by Claudius, fell in love with the daughter of his jailer. Before he was executed, he allegedly sent her a letter signed "from your Valentine." Probably the most plausible story surrounding St. Valentine is one not focused on Eros (passionate love) but on agape (Christian love): he was martyred for refusing to renounce his religion.

In 1969, the Catholic Church revised its liturgical calendar, removing the feast days of saints whose historical origins were questionable. St. Valentine was one of the casualties.

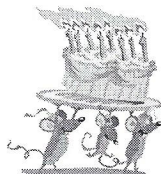
Over the centuries, the holiday evolved, and by the 18th century, gift-giving and exchanging hand-made cards on Valentine's Day had become common in England. Hand-made valentine cards made of lace, ribbons, and featuring cupids and hearts eventually spread to the American colonies. The tradition of Valentine's cards did not become widespread in the United States, however, until the 1850's, when Esther A. Howland, a Mount Holyoke graduate and native of Worcester, Massachusetts, began mass-producing them. Today, of course, the holiday has become a booming commercial success. According to the Greeting Card Association, 25% of all cards sent each year are Valentines.



February Birthdays



| | |
|----------------------------|-----------|
| <i>Nick Sullivan</i> | <i>1</i> |
| <i>Cheryl Wank</i> | <i>1</i> |
| <i>Blakesley Walters</i> | <i>4</i> |
| <i>Sean MacRitchie</i> | <i>6</i> |
| <i>Bob Steely</i> | <i>6</i> |
| <i>Paul Gobble</i> | <i>7</i> |
| <i>Terry Dawson</i> | <i>9</i> |
| <i>Ryan Romyak</i> | <i>9</i> |
| <i>Ed Calkins</i> | <i>10</i> |
| <i>Marianne MacRitchie</i> | <i>10</i> |
| <i>Christopher Reece</i> | <i>10</i> |
| <i>Brooke Saunders</i> | <i>10</i> |
| <i>Jack Sizer</i> | <i>10</i> |
| <i>Brad Brundage</i> | <i>11</i> |
| <i>Wendy Field</i> | <i>11</i> |
| <i>Becky Reinhart</i> | <i>11</i> |
| <i>Tyler Carpenter</i> | <i>12</i> |
| <i>Jean Stafford</i> | <i>13</i> |
| <i>Allie Steele</i> | <i>13</i> |
| <i>Kim Killoren</i> | <i>15</i> |
| <i>Lisa Miller Ballmer</i> | <i>15</i> |
| <i>Pat Peters</i> | <i>16</i> |
| <i>Ed Davis</i> | <i>17</i> |
| <i>Cindi Lebiecki</i> | <i>17</i> |
| <i>Kate Schrauben</i> | <i>18</i> |
| <i>Becky Stubbs</i> | <i>18</i> |
| <i>Fred Davis</i> | <i>19</i> |
| <i>Jerry Wittwer</i> | <i>19</i> |
| <i>Nancy Nott</i> | <i>20</i> |
| <i>Carol Coverly</i> | <i>22</i> |
| <i>Tyler Fitzgerald</i> | <i>23</i> |
| <i>Brittany Irey</i> | <i>23</i> |
| <i>Alyson Muss</i> | <i>23</i> |
| <i>Jill Bair</i> | <i>24</i> |
| <i>Stella Carahaly</i> | <i>24</i> |
| <i>Joyce Farho</i> | <i>24</i> |
| <i>Micky Kemple</i> | <i>25</i> |



| | |
|------------------------------|-----------|
| <i>Ann Meyer Fontaine</i> | <i>25</i> |
| <i>Glenn Fontaine</i> | <i>25</i> |
| <i>Beth Farho</i> | <i>26</i> |
| <i>Laura Fitzgerald</i> | <i>26</i> |
| <i>Amelia Howard</i> | <i>27</i> |
| <i>Christy Stallings</i> | <i>27</i> |
| <i>Jamie Fiordalis Jozic</i> | <i>28</i> |
| <i>Richard Venner</i> | <i>28</i> |
| <i>Brian Young</i> | <i>28</i> |

and Anniversaries

- 6 Phyllis and Larry Youse ~ 45*
- 9 Tom Stegink and Kathleen Griffin ~ 36*
- 11 Ann and Glenn Fontaine ~ 10*
- 22 Mike and Pam Moseley ~ 31*
- 28 Micky and Mark Kemple ~ 35*



First Presbyterian Church
8047 Church Street
Richland, MI 49083

ADDRESS SERVICE REQUESTED

FIRST PRESBYTERIAN CHURCH STAFF

Dr. Mark W. Jennings, *Pastor*
Murray Cooper, *Seminary Intern*
Faith Fiordalis, *Financial Secretary*
Gretchen Ferris, *Treasurer*
Larry Myland, *Director of Music*
Sadarra Fields, *Director of Choirs*
Meredith Alspach, *Program Coordinator*
Samantha Gay, *Children's Worship Leader*
Alanna Wyckoff and Allie Steele, *Children's Worship Helpers*
Heather Putt, *Nursery Supervisor*
Connie Slater, *Sexton*
Julie Pixley, *Administrative Secretary*

